

WOODLINE COLLECTION



AKOUO
acoustics®





SOPHISTICATED SOUND MANAGEMENT

WoodLine wall and ceiling panels combine the warmth of wood with excellent acoustical values. WoodLine panels are available in five different systems and come in a variety of standard and exotic wood species. Perforations can be added to the majority of WoodLine wall and ceiling panels to achieve optimum acoustical results, with NRC ratings as high as 0.90.

SLAT

SLATTED WALL AND CEILING SYSTEM



WoodLine Slat is a traditional linear wall and ceiling system that incorporates various blade sizes and spacing. WoodLine Slat is available in 1' wide by 8' long sections, with arrangements of three to eight blades per section. Sections are installed using an attachment clip suspended from a heavy duty 15/16" T-grid, and work with both backer and dowel assemblies. Available in genuine wood veneer or laminate. Various acoustical materials can be utilized to garner different acoustical results.

QUICK SHIP PROGRAM AVAILABLE



BLACK HARDWOOD
BACKER ASSEMBLY



DOWEL ASSEMBLY



FEATURES

- Linear wall and ceiling blade system
- Assembly: black hardwood backers or dowels in fixed aluminum or flexible PVC
- Face & rear balancing veneers
- Custom sizes available

FINISHES

- Wood veneer or laminate on MDF core
- Natural clear lacquer (veneer only)

INSTALLATION

- Ceiling: Attachment clip to standard T-grid system
- Wall: Wood screw into hardwood backer

STANDARD DIMENSIONS

- Section Size: 1' W x 8' L
- Blade Widths:
 - 6-8 blades: 0.625"
 - 5 blades: 0.75"
 - 4 blades: 1"
 - 3 blades: 1.25"
- Blade Heights: 2" | 3" | 4"

FIRE RATING

- Class A fire rating per ASTM E-84
- CARB2 compliant

ACOUSTICS

- NRC rating up to 0.90

EDGE

LINEAR WALL & CEILING PANELS



Easy to cut and install, WoodLine Edge is a versatile, stunning and sustainable wall or ceiling treatment. Edge panels are comprised of a wood-veneered MDF board with a backing made from 100% recyclable PET felt. Panels are available in four colors, measuring 24" x 96" and can easily be cut to size onsite. Sections are installed using furring strips or mounted directly to the surface with screws or adhesive. Acoustical ratings vary depending on installation method, with NRC ratings as high as 0.80.





FEATURES

- Linear wall & ceiling panels
- Quick & easy installation
- Cut to size in field
- Built-in spacers

FINISHES

- Wood veneered MDF board with 100% recyclable PET felt backing
- Choice of 4 wood veneers



WHITE ASH



NATURAL OAK



NATURAL WALNUT



WENGE

INSTALLATION

- Ceiling: Furring strips
- Wall: Furring strips or direct mount with screws or adhesive

STANDARD DIMENSIONS

- Panel Size: 24" x 96"
- Thickness: 0.87"

FIRE RATING

- Felt Backing: Class A fire rated per ASTM E-84
- Wood Slats: Not fire rated

ACOUSTICS

- NRC rating up to 0.80

CLASSIC

STANDARD WALL & CEILING PANELS



WoodLine Classic wall and ceiling panels are installed using pivot clips into a standard 15/16" T-grid. Panels are available in genuine wood veneer or laminate, with a reveal or flush edge. Reveal edge panels leave a 3/8" space between planks; wood strips are provided to conceal the pivot clip. Flush edge panels fit together seamlessly, creating a 5/64" bevel detail. Perforations can be added to Classic wall and ceiling panels to achieve optimum acoustical results.





FEATURES

- Traditional wall & ceiling panel
- Reveal or flush edge
- Concealed mounting hardware
- Face & rear balancing veneers
- Customize to fit any environment

STANDARD DIMENSIONS

- 48" x 96"

INSTALLATION

- Ceiling: Pivot clip attaches to standard T-grid system
- Wall: Furring strips & nail clips

FINISHES

- Wood veneer or laminate on MDF core
- Natural clear lacquer (veneer only)
- Variety of perforation options

FIRE RATING

- Class A fire rating per ASTM E-84
- CARB2 compliant

ACOUSTICS

- NRC rating up to 0.90

PARALLEL

LINEAR WALL & CEILING PLANKS



WoodLine Parallel wall and ceiling planks feature a continuous linear aesthetic utilizing straight lines. Planks are available in genuine wood veneer or laminate, with a reveal or flush edge. Reveal edges include an acoustical textile, providing additional performance. Flush edges leave a $5/64$ " space between planks. Perforations can be added to Parallel wall and ceiling planks to achieve optimum acoustical results.





FEATURES

- Linear planks with reveal or flush edge detail
- Face & rear balancing veneers
- Standard or custom sizes & reveals available

STANDARD DIMENSIONS

- Plank Widths: 2.5" up to 12"
- Plank Lengths: up to 120"
- Reveal Widths: 0.125" up to 1.1875"

INSTALLATION

- Ceiling: Pivot clip attaches to standard T-grid system
- Wall: Furring strips & nail clips

FINISHES

- Wood veneer or laminate on MDF core
- Natural clear lacquer (veneer only)
- Variety of perforation options

FIRE RATING

- Class A fire rating per ASTM E-84
- CARB2 compliant

ACOUSTICS

- NRC rating up to 0.90

GROOVE

TONGUE AND GROOVE WALL & CEILING PLANKS



WoodLine Groove wall and ceiling planks allow for a wide range of acoustical performance through various width and spacing configurations. Installation is simple by utilizing a unique tongue and groove system, designed to work in conjunction with a 5/0 nailclip, creating an overall monolithic appearance. Groove panels are available in genuine wood veneer or laminate; perforations can be added to achieve optimum acoustical results.



SAMPLE CONFIGURATIONS



FEATURES

- Monolithic appearance
- Multiple width & spacing options
- Reveal or flush edge
- Face & rear balancing veneers
- Custom sizes available

STANDARD DIMENSIONS

- 5" x 96" or 11.375" x 96"

INSTALLATION

- Ceiling: Pivot clip attaches to standard T-grid system
- Wall: Furring strips & nail clips

FINISHES

- Wood veneer or laminate on MDF core
- Natural clear lacquer (veneer only)
- Variety of perforation options

FIRE RATING

- Class A fire rating per ASTM E-84
- CARB2 compliant

ACOUSTICS

- NRC rating up to 0.90

STANDARD VENEERS

WoodLine wall and ceiling panels are available in genuine wood veneer or laminate on an MDF substrate with face and rear balancing veneers. The applied finish on wood veneer is a natural clear lacquer.



AMERICAN CHERRY



DARK WALNUT



AMERICAN MAPLE



AMERICAN RED OAK



AMERICAN WHITE OAK



AMERICAN YELLOW POPLAR



ANIGRE



ASH



AYOUS



BAMBOO Caramel



BAMBOO NATURAL



BIRCH



BLACK WALNUT



CAROLINA PINE



CEDAR



EUROPEAN ASH



EUROPEAN OAK



EUROPEAN PINE



KHAYA MAHOGANY



OREGON PINE



PADOUK



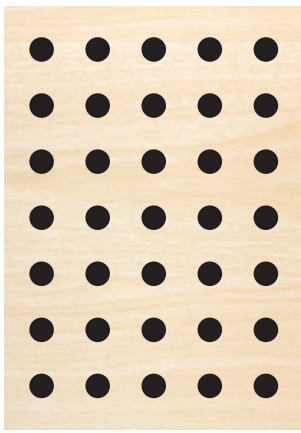
SAPPELI MAHOGANY



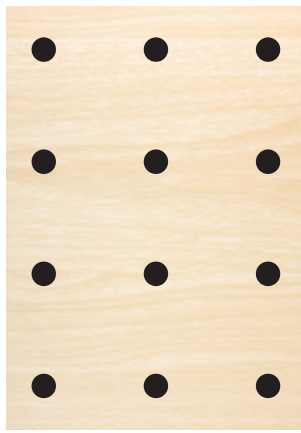
SPRUCE



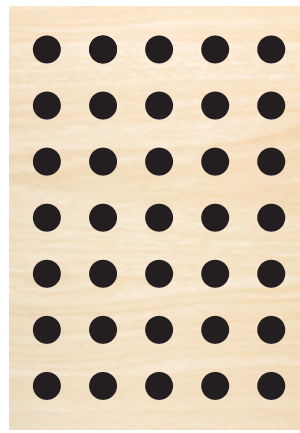
TEAK



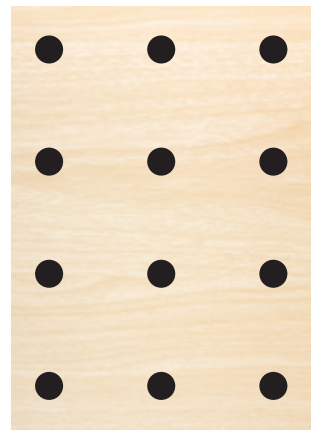
716R



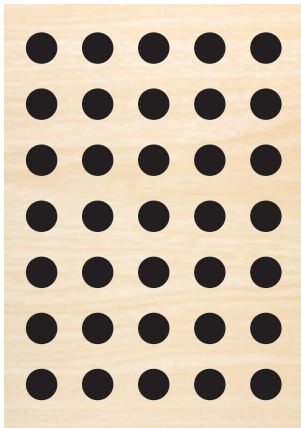
732R



816R



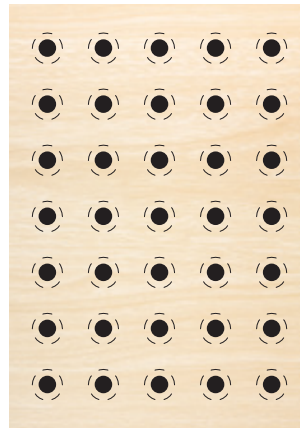
832R



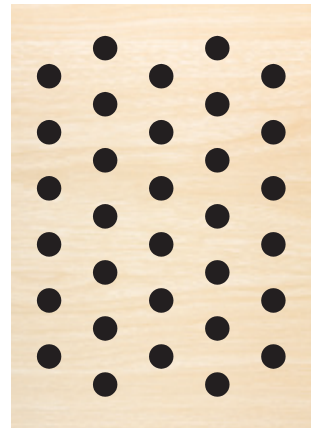
916R



932R



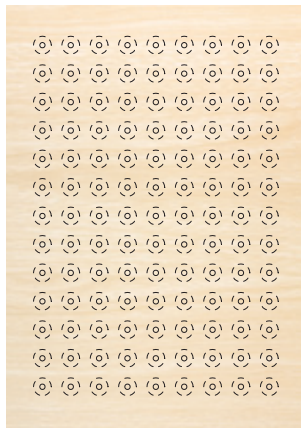
5916R DUAL PERF



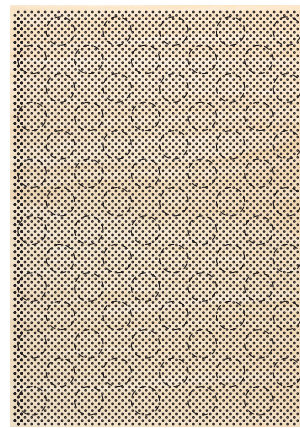
7816R



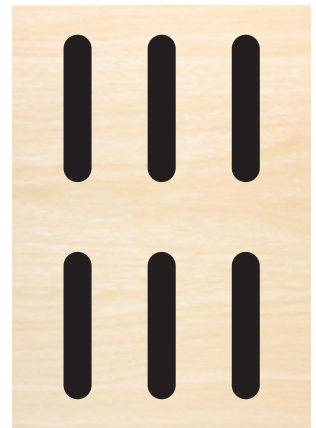
71632IR



MICRO PERF



NANO PERF 0.5



89024SLR

STANDARD PERFORATIONS

Perforations can be added to the majority of WoodLine products to achieve optimum acoustical results with NRC ratings as high as 0.90. The larger the perforations or the higher the number of holes, the more open-air space within the product, resulting in better acoustical values.



AKOUO
acoustics

a division of Sedia Systems

AKOUO-ACOUSTICS.COM